

C R U I S E R R A C E R

www.cruiser-racer.com

-63-

GS 42 Race 2005 Bohemia Express

SOLD



C R U I S E R R A C E R

www.cruiser-racer.com

Buscarons, 6. 08022 Barcelona (Spain)

Tel.: (+34) 934 186 632

Mobile: (+34) 616 420 634

E-Mail: info@cruiser-racer.com

C R U I S E R R A C E R

www.cruiser-racer.com

GENERAL	
Name	GS 42 Race 2005 Bohemia Express
Model	Grand Soleil 42 Race 2005
Type	RACER-CRUISER
Year	2005
Hull Material	Epoxy
Flag	Czech
Sail Number	CZE 663
Color	White
Lying	Italy
Price	PRICE UNDER REQUEST
Vat	NOT PAID
Slogan	Great oportunity at very good price
General Notes	Great design by Botin and Carkeek that won many regattas and still competitive nowadays.

DESIGN	
Builder	Cantiere del Pardo
Designer	Botin & Carkeek
Notes	Racing bulb keel BOTIN CARKEEK modification in 2010

DIMENSIONS	
Loa	13.00 m
Beam	3,67 m
Draft	2,54 m
Ballast	4.000 kg
Displacement	6.600 kg

C R U I S E R R A C E R

www.cruiser-racer.com

Buscarons, 6. 08022 Barcelona (Spain)

Tel.: (+34) 934 186 632

Mobile: (+34) 616 420 634

E-Mail: info@cruiser-racer.com

C R U I S E R R A C E R

www.cruiser-racer.com

ENGINES	
Engines	Diesel Engine. Yanmar 38hp with saildrive.
Propeller	Two bladed Gori folding propellor
Notes	Spinlock throttle control unit in cockpit Fuel gauge Waterlock with silencer

TANKAGE	
Fuel	75 LITRE stainless I
Water	Water tanks: 2 * 100 litre (flexible) . Fresh water system with Hand pumps at galley and heads basin I
Notes	Fuel Filter and Water Separator.

GALLEY	
Icebox	Insulated Ice Box.
Notes	Galley sink with overboard drain Vanity sink with overboard drain Manual bilge pumps: 1 Cockpit, 1 Below deck Electric Bilge Pump below deck Marine head plumbed for intake of sea water Flush seacocks on all openings below decks Fresh water filler above deck

INSTRUMENTS	
Electronics	B&G ELETTRONIC
Vhf	VHF sinmrad RD68f

C R U I S E R R A C E R

www.cruiser-racer.com

Buscarons, 6. 08022 Barcelona (Spain)

Tel.: (+34) 934 186 632

Mobile: (+34) 616 420 634

E-Mail: info@cruiser-racer.com

INSTRUMENTS

Notes	BGH130001 Hercules main processor 890-PK-12 Hercules no nmea display 332-PK-12 Hercules 20/20 display BGH030002 head of the vertical must 1.04 mt SEN-SPD-HPF speed sensor SEN-DPT-HPF depth sensor 486-00-009 compass sensor Heeling sensor Performance unit Antenna c-map egonos Antenna vhf + altoparlante esterno
--------------	--

ELECTRICAL

Batteries Number	Batteries: 2 x 80Amp hour gel batteries
Notes	12 Volt DC distribution panel with appropriate breakers, switches etc. Battery condition meter Circuit breakers of appropriate amperage Main battery switch Alternator, 80Amp on engine ORC approved navigation lights Red & White dome lights for general illumination Recessed Halogen lights in saloon, galley, nav area Halogen reading lights in cabins

SPARS & RIGGING

Sails	4 complete sets of sails.
Rigging	Rod rigging
Boom	Custom full depth carbon boom. Reef jammer located inside boom at forward end. Course outhaul to exi
Vang	rigid
Spinnaker Pole	Roller bearing Spinnaker pole track. Carbon spinnaker pole

C R U I S E R R A C E R

www.cruiser-racer.com

SPARS & RIGGING

	Notes	<p>PRE-RIG DIMENSIONS (provisory): I : 15,880 J : 4,747 P : 16,64 E : 6,16 SAIL AREA (provisory): MAIN : 61.23 m2 GENOA 42.85 m2 SPINNAKER 130.00 m2</p> <p>Custom carbon rig: Hall spars USA Custom moulded deck collar Fine outhaul to lead back to mainsheet trimmer Running rigging in Spectra or Vectran or Dynema.</p>
--	--------------	--

DECK

	Winches	<p>Primaries: HARKEN 48.3 RHalyard: HARKEN 45.2 STRQMainsheet: HARKEN 48.2 STRBackstay: HARKEN 40.2 STRWinch Handles: 10 Double Grip lock(2)10 Single Grip lock(4)</p>
	Notes	<p>Pulpits: S/s custom bow & stern rails with lights Stanchions: 6 tapered with braces, 4 tapered Stanchion bases: custom flush fit to deck radius Lifelines: Upper & Lower 1*19 s/s wire Spinlock Rope clutches for halyards, boom reef(4) Spinlock jammer boom reef, main halyard(2) Transverse jib tracks, Fully adjustable with underdeck purchase leading aft to jib trimmer. Cunningham led aft to mainsheet trimmer Outhaul led aft to mainsheet trimmer Mainsheet System German' style, lead under deck and back to main trimmer. Spinnaker fore guy Foredeck Hatch: Lewmar round size 22(1) Cockpit Lewmar hatches Low Profile Size20(2) Custom recessed Liferaft locker in cockpit floor.</p>

SAFETY

	Ce Registration	YES
	Fire Extinguishers	YES
	Epirb	no

C R U I S E R R A C E R

www.cruiser-racer.com

Buscarons, 6. 08022 Barcelona (Spain)

Tel.: (+34) 934 186 632

Mobile: (+34) 616 420 634

E-Mail: info@cruiser-racer.com

C R U I S E R R A C E R

www.cruiser-racer.com

SAFETY	
Liferaft	YES
Notes	Complete

CONSTRUCTION	
Notes	<p>Keel: Keel floor support structure: Composite grid utilizing carbon where permitted by IMS rules. 0.3LOA-0.7LOA Part Lead fin with Stainless support structure and glass wood shoe. Keel is fairing in numeric control at 0.1 mm</p> <p>Ergal Rudder Stock with Epoxy/Carbon blade Upper and lower self aligning bearings JP3 Custom Tiller</p>

ACCOMODATIONS	
Bath Shower	Yes
Notes	<p>Stove: 3 burner with oven Interior Layout is designed to meet the IMS Cruiser/Racer Regulations as well as the ORC Special Regulations to Category 2. Care has been taken in the layout to ensure good weight distribution and a good working interior. The interior will be lightweight and elegant. Interior minimum headliner with halogen lighting. Interior styling should feature composite/metal entrance steps. Simple combination of wood trimming with Carbon in-lay on saloon table, chart area, galley and sole.</p>

EXTRA NOTES	
Extra Notes	<p>Craddle 3 Fenders 4 lines berthing 1 Dehumidifier 1 Autopilot 8 handles Tool box</p>

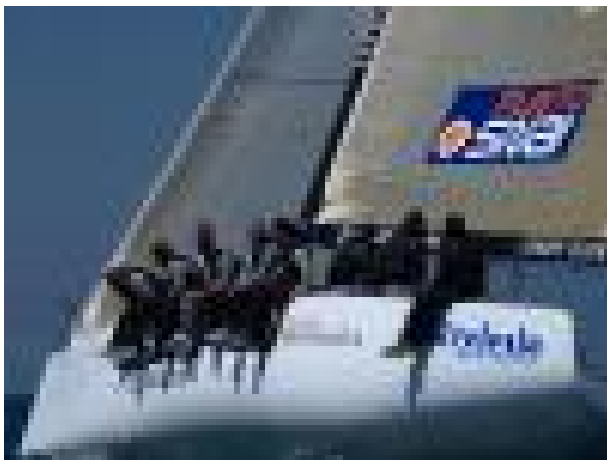
C R U I S E R R A C E R

www.cruiser-racer.com

Buscarons, 6. 08022 Barcelona (Spain)
Tel.: (+34) 934 186 632
Mobile: (+34) 616 420 634
E-Mail: info@cruiser-racer.com

C R U I S E R R A C E R

www.cruiser-racer.com



C R U I S E R R A C E R

www.cruiser-racer.com

Buscarons, 6. 08022 Barcelona (Spain)

Tel.: (+34) 934 186 632

Mobile: (+34) 616 420 634

E-Mail: info@cruiser-racer.com

C R U I S E R R A C E R

www.cruiser-racer.com



C R U I S E R R A C E R

www.cruiser-racer.com

Buscarons, 6. 08022 Barcelona (Spain)

Tel.: (+34) 934 186 632

Mobile: (+34) 616 420 634

E-Mail: info@cruiser-racer.com

CRUISER RACER

www.cruiser-racer.com



CRUISER RACER

www.cruiser-racer.com

Buscarons, 6. 08022 Barcelona (Spain)

Tel.: (+34) 934 186 632

Mobile: (+34) 616 420 634

E-Mail: info@cruiser-racer.com

C R U I S E R
R A C E R
www.cruiser-racer.com



C R U I S E R
R A C E R
www.cruiser-racer.com

Buscarons, 6. 08022 Barcelona (Spain)

Tel.: (+34) 934 186 632

Mobile: (+34) 616 420 634

E-Mail: info@cruiser-racer.com

C R U I S E R R A C E R

www.cruiser-racer.com



C R U I S E R R A C E R

www.cruiser-racer.com

Buscarons, 6. 08022 Barcelona (Spain)

Tel.: (+34) 934 186 632

Mobile: (+34) 616 420 634

E-Mail: info@cruiser-racer.com