

CRUISER RACER

www.cruiser-racer.com

-211-

Judel and Vrolijk 42

SOLD



CRUISER RACER

www.cruiser-racer.com

Buscarons, 6. 08022 Barcelona (Spain)

Tel.: (+34) 934 186 632

Mobile: (+34) 616 420 634

E-Mail: info@cruiser-racer.com

C R U I S E R R A C E R

www.cruiser-racer.com

GENERAL	
Name	Judel and Vrolijk 42
Model	42 Race
Type	RACER-CRUISER
Year	2004
Hull Material	Epoxy
Flag	Finnish
Lying	Finland
Price	PRICE UNDER REQUEST
Vat	PAID
Extra Notes	2 blade propeller racing Gory. Spinlock clutch and gear control mounted in cockpit
Slogan	.

DESIGN	
Designer	Vrolijk

DIMENSIONS	
Loa	13.00 m
Beam	3.26 m
Draft	2.54 m
Displacement	6600 kg

GALLEY	
Refrigerator	20 lt fridge
Notes	Manual pressure water pumps supplying the galley 2 burner gas cooker Circular stainless steel wash basin with fresh water manual pump Stowage cupboard for kitchen

C R U I S E R R A C E R

www.cruiser-racer.com

Buscarons, 6. 08022 Barcelona (Spain)

Tel.: (+34) 934 186 632

Mobile: (+34) 616 420 634

E-Mail: info@cruiser-racer.com

C R U I S E R R A C E R

www.cruiser-racer.com

INSTRUMENTS

Electronics	B&G Hercules with 3 pcs 20X20 mast displays and 2 displays in cockpit
Gps	GPS FURUNO GP 32
Vhf	VHF radio ICOM with speaker in cockpit
Compass	Electronic compass, magnetic compass
Radar	Chartplotter Raymarine C80

ELECTRICAL

Batteries Number	1 gel Battery 70 AH-12V for start of engine , 1 gel Battery 140 AH-12V for electrical installations
Notes	<p>Red/green navigation lights at bow pulpit. White stern navigation light at starboard aft pulpit. White light at mast head for windex. 8 halogen spotlights for interior 1 halogen lights for navigation table Fluorescent lights for toilet and kitchen Electrical switchboard with 10 thermic fuses/switches Instruments for diesel tank level and service battery voltage. 2 12 V plugs by navigation station Shore power</p>

SPARS & RIGGING

C R U I S E R R A C E R

www.cruiser-racer.com

Buscarons, 6. 08022 Barcelona (Spain)

Tel.: (+34) 934 186 632

Mobile: (+34) 616 420 634

E-Mail: info@cruiser-racer.com

C R U I S E R R A C E R

www.cruiser-racer.com

SPARS & RIGGING	
Sails	3DL SAILS NORTH SAILS 1. MAIN 3DL KEVLAR 20/06/04 2. MAIN 3DL CARBON 20/07/04 3. GENOA Light 3DL KEVLAR 20/06/04 4. GENOA Light 3DL CARBON 20/07/04 5. GENOA Medium 3DL KEVLAR 20/06/04 6. GENOA Heavy 3DL CARBON 20/06/04 7. GENOA 3.5 KEVLAR 20/06/04 8. GENOA 5.0 KEVLAR 15/05/06 9. GENOA Light WB-SAILS 01/08/06 SPINNAKER: SPINNAKER 1.5 S3 20/06/04 SPINNAKER 0.4 S2 20/07/04 SPINNAKER 0.5 S2 +20/06/04 SPINNAKER AIRX 500 20/08/04 CODE 0 NYLON SOFT NORLAM 20/08/04 2 Spinnaker halyard (spectra) 1 Genoa halyard (vectran) 1 Topin Lift (spectra) 1 Main halyard 2 x 1. (spectra)
Rigging	Standing rigging Navtec with Navtec turnbuckles, v1,d1, d2 with turnbuckle, forestay with turnbuckle
Mast	CARBON MAST KING COMPOSITES designed for this boat with section 245 X 123 mm with 2 set of carbon sp
Boom	Carbon fiber boom in carbon colour with double block for outhaul and reef
Vang	Vang fitting, and prepared to fit an outhaul 16.1
Spinnaker Pole	Carbon spinnaker pole with Hall terminals.
Tuff Luff	Genoa Tuff-Luff.
Notes	Backstay in PBO Back-Stay fast system (Frederiksen) Internal tube for cables inside mast Integral mainsail groove in mast Spinnaker pole track mounted on front harken or similar 2 genoa sheets.spectra (2 G-lock),2 spinnaker sheets(spectra),2 foreguy (spectra), 1 mainsheet (spectra), 2 genoa sheet car pullers(spectra), 2 barbers genoa (spectra), 2 barbers spi (spectra) cunningham, Vang control lines(spectra), backstay control with magic wheel and outhaul 16:1

C R U I S E R R A C E R

www.cruiser-racer.com

Buscarons, 6. 08022 Barcelona (Spain)

Tel.: (+34) 934 186 632

Mobile: (+34) 616 420 634

E-Mail: info@cruiser-racer.com

C R U I S E R R A C E R

www.cruiser-racer.com

DECK	
Deck Hardware	DECK GEAR (Harken-spinlock) Backstay adjustable by a GRP wheel and 2 block cascade system Harken
Winches	2 X HARKEN 53 Winches self tailing 2 SPEED for mainsail 2 X HARKEN 48 Winches self tailing 3 SPEED for genoa 2 X HARKEN 45 Winches self tailing 2 SPEED RACING with double drum for halyards. 3 single handles with lock 10" and one 8"
Notes	<p>The deck is a sandwich construction using EPOXY, E glass and pvc foam of 80kg/m3 with local reinforcements of 200kg/m3, laminated with a vacuum bag process.</p> <p>The deck is finished in isothalic gelcoat with a moulded antislip in the necessary areas.</p> <p>The deck has a moulded headliner to meet IMS requirements.</p> <p>The deck has moulded recesses for hatches, port lights, mast collar, deck organisers and winches.</p> <p>The mainsheet system is moulded under deck.</p>

SAFETY	
Notes	<p>1 Manual pump in the cockpit</p> <p>1 Manual pump in the aft cabin</p> <p>10 life jackets.</p> <p>10 harnesses</p> <p>2 Torches</p> <p>spare light bulb.</p> <p>1 wires cutter.</p> <p>BENGAL Kit category 2</p>

CONSTRUCTION

C R U I S E R R A C E R

www.cruiser-racer.com

Buscarons, 6. 08022 Barcelona (Spain)
Tel.: (+34) 934 186 632
Mobile: (+34) 616 420 634
E-Mail: info@cruiser-racer.com

C R U I S E R R A C E R

www.cruiser-racer.com

CONSTRUCTION

Notes	<p>Hull is laminated as solid single skin in a female mould using, isothalic gelcoat E glass (both unidirectional and multiaxial) and epoxy resin. The hull is post-cured until 70Å°c. The hull reinforcement consists of longitudinal and transversal frames; constructed in pvc foam and Carbon fiber biaxial and uni fibres (reinforced in certain areas with unidirectional carbon fibre); which are laminated to the hull using a vacuum bag process. Bulkheads are also laminated to the hull using vacuum bag process. Waterline is marked on the hull. A steel framework is used as reinforcement to attach the keel to the hull.</p> <p>KEEL The complete keel structure is made in England by HENRY IRONS. The keel has a 25 mm top plate of stainless steel which is attached with 14 bolts of 24mm diameter. The upper part of the fin is made using lead/antominium. The keel is made to precise IMS designs and is finished with an epoxy primer.</p> <p>A specific keel to level boat stability while in the water.</p> <p>RUDDER The rudder blade in pvc foam, E-glass and EPOXY is laminated using a vacuum bag process with finish in isothalic gel coat. The stock is made in anodised aluminium.</p> <p>STEERING SYSTEM Carbon steering wheel diameter 188 cm attached to composite pedestal with steering well in cockpit sole. Cables pass through light weight sheaves to quadrant. Rudder bearings and quadrant are Jefa.</p>
--------------	--

ACCOMODATIONS

Bath Shower	Yes
Notes	<p>Double berth in front cabin Hanging wardrobe Marine toilet WC Plastimo Plastic wash basin with manual fresh water pump 2 Longitudinal sofas/berths with foam cushions and hinged backrest in white color 2 Wardrobes to keep clothes Table of 0,55 m2, folding FIX WOOD table in the middle.</p>

C R U I S E R R A C E R

www.cruiser-racer.com

Buscarons, 6. 08022 Barcelona (Spain)

Tel.: (+34) 934 186 632

Mobile: (+34) 616 420 634

E-Mail: info@cruiser-racer.com

C R U I S E R
R A C E R
www.cruiser-racer.com

EXTRA NOTES

Radio Cd	Radio CD Panasonic with 4 speakers
Extra Notes	2 blade propeller racing Gory. Spinlock clutch and gear control mounted in cockpit

C R U I S E R
R A C E R
www.cruiser-racer.com

Buscarons, 6. 08022 Barcelona (Spain)

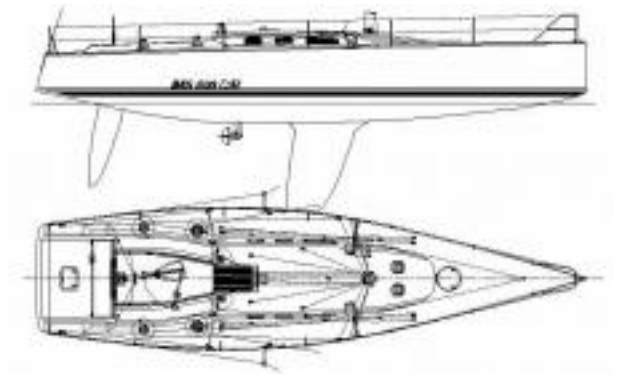
Tel.: (+34) 934 186 632

Mobile: (+34) 616 420 634

E-Mail: info@cruiser-racer.com

CRUISER RACER

www.cruiser-racer.com



CRUISER RACER

www.cruiser-racer.com

Buscarons, 6. 08022 Barcelona (Spain)

Tel.: (+34) 934 186 632

Mobile: (+34) 616 420 634

E-Mail: info@cruiser-racer.com