

# **C R U I S E R R A C E R**

[www.cruiser-racer.com](http://www.cruiser-racer.com)

**-633-**

**GP 42 Swing**

**SOLD**



# **C R U I S E R R A C E R**

[www.cruiser-racer.com](http://www.cruiser-racer.com)

Buscarons, 6. 08022 Barcelona (Spain)

Tel.: (+34) 934 186 632

Mobile: (+34) 616 420 634

E-Mail: [info@cruiser-racer.com](mailto:info@cruiser-racer.com)

# C R U I S E R R A C E R

www.cruiser-racer.com

GENERAL	
<b>Name</b>	GP 42 Swing
<b>Model</b>	GP 42
<b>Type</b>	RACER
<b>Year</b>	2007
<b>Hull Material</b>	Carbon
<b>Flag</b>	japanese
<b>Sail Number</b>	JPN5555
<b>Lying</b>	Japan
<b>Price</b>	PRICE UNDER REQUEST
<b>Vat</b>	NOT PAID
<b>Slogan</b>	The racing soul... pure speed
<b>General Notes</b>	The only GP 42 really updated to IRC.
<b>Final Notes</b>	<p>This boat is as known as Movistar until 2009.</p> <p>It is very good timing of your inquiry, our GP42 owner keen to sell his boat. I sailed with that boat and organized IRC modification.</p> <p>The boat name is "SWING" GP42 previous Movistar, we bought that boat beginning of 2009 and participated 2009 Med Cup two event.</p> <p>Then boat modified for IRC version true the summer 2009 at Spain and send to Japan Osaka racing on owner's home yacht club.</p> <p>We modified as below</p> <ol style="list-style-type: none"> <li>1, bow sprit</li> <li>2, add stern length 1 ft long (make water line longer)</li> <li>3, add bulb weigh 200kg</li> <li>4, repeated hull and deck</li> <li>5, small reinforcement deck fitting for racing</li> </ol> <p>Those modifications had instruction with Botin Carkeek and construction by Longitude boat builders.</p> <p>She had very good performance after IRC mods, won Japan cup 2010 beat TP52 and other typical heavy IRC type of boats.</p> <p>That regatta was sailed by vasco vascotto and his team, had rig set up guide too.</p> <p>The sail is all North sail 3DL include good racing sails.</p> <p>Also, she had just finish fully racing check last two weeks, which is normal racing check and maintenances for end of racing season include Mast off and keel off.</p> <p>The boat is always very good professional maintenance, hasn't any blockages and collision.</p>

# C R U I S E R R A C E R

www.cruiser-racer.com

**Buscarons, 6. 08022 Barcelona (Spain)**

**Tel.: (+34) 934 186 632**

**Mobile: (+34) 616 420 634**

**E-Mail: info@cruiser-racer.com**

# CRUISER RACER

www.cruiser-racer.com

## DESIGN

<b>Designer</b>	Botin & Carkeek
-----------------	-----------------

## DIMENSIONS

<b>Loa</b>	13.00 m
<b>Lwl</b>	12.45 m
<b>Beam</b>	3.88 m
<b>Draft</b>	2.59 m
<b>Displacement</b>	4663 kg

## ENGINES

<b>Engines</b>	Yanmar 3YM30
----------------	--------------

## INSTRUMENTS

<b>Electronics</b>	B&G H3000 with load cell
--------------------	--------------------------

## ELECTRICAL

<b>Notes</b>	Batteries are: n.12 120ah5 600. n.21 120Ah7 600.
--------------	--

## SPARS & RIGGING

CRUISER  
RACER  
www.cruiser-racer.com

Buscarons, 6. 08022 Barcelona (Spain)

Tel.: (+34) 934 186 632

Mobile: (+34) 616 420 634

E-Mail: info@cruiser-racer.com

# CRUISER RACER

www.cruiser-racer.com

## SPARS & RIGGING

<b>Sails</b>	<p>All sails are North sails. Mainsail: 2010, 2011, 2012 3DL Head sail: Light :2009, 2010, 2011 Med: 2009, 2011 Medium &amp; Heavy: 2009 Heavy: 2007, 2009, 2010 Jib Top: 2010 Wind Seeker: 2010 Spinnaker staysl: 2010 Asy-spinnaker: 1A: 2007, 2009, 2010 2A: 2007, 2010 2A Deep: 2010 3A: 2010 4A: 2007, 2009 Code Zero: 2010</p>
<b>Notes</b>	<p>Spar made by King Composite. Center HLYx1 MH HLYx2 Fractional x1 Main Hlyx1</p> <p>2 spreaders. All Harken Equipments (Ex: rail base): Backstay winch is No45 self tailing. Harken CRX Traveler Car. Harken No 50.2 Winch. All Blocks are Harken. Cockpit winch Port: No45 STD: 50.2 Primary winch is Harken 530.</p>

## CONSTRUCTION

<b>Notes</b>	<p>The hull is longer than the original GP42 about 1ft. All modified is following Botin partners. Hull Material is Carbone composite. Carbone rudder &amp; shaft. Double Wheel system by Jeffa Wheel. The keel is adding the lead about 230kg for IRC rating. It is very faired. Window for Keel. Folding pro-pera.</p>
--------------	---

# CRUISER RACER

www.cruiser-racer.com

Buscarons, 6. 08022 Barcelona (Spain)

Tel.: (+34) 934 186 632

Mobile: (+34) 616 420 634

E-Mail: info@cruiser-racer.com

# C R U I S E R R A C E R

[www.cruiser-racer.com](http://www.cruiser-racer.com)

## ACCOMODATIONS

<b>Bath Shower</b>	Yes
--------------------	-----

## EXTRA NOTES

<b>Extra Notes</b>	Cradle. Furlor spinnaker staysail. Quick Vang System. Deck cover (Full). Repaint (Awl Grip) 2009 late. New carbone support bracket. New Non-Skid 2009. New foot step for main sail trimmer 2009. Stantion socket lamination 2009. And more spare parts.
--------------------	--

# C R U I S E R R A C E R

[www.cruiser-racer.com](http://www.cruiser-racer.com)

Buscarons, 6. 08022 Barcelona (Spain)

Tel.: (+34) 934 186 632

Mobile: (+34) 616 420 634

E-Mail: [info@cruiser-racer.com](mailto:info@cruiser-racer.com)

# **C R U I S E R R A C E R**

[www.cruiser-racer.com](http://www.cruiser-racer.com)



# **C R U I S E R R A C E R**

[www.cruiser-racer.com](http://www.cruiser-racer.com)

Buscarons, 6. 08022 Barcelona (Spain)

Tel.: (+34) 934 186 632

Mobile: (+34) 616 420 634

E-Mail: [info@cruiser-racer.com](mailto:info@cruiser-racer.com)

# **C R U I S E R R A C E R**

[www.cruiser-racer.com](http://www.cruiser-racer.com)



# **C R U I S E R R A C E R**

[www.cruiser-racer.com](http://www.cruiser-racer.com)

Buscarons, 6. 08022 Barcelona (Spain)

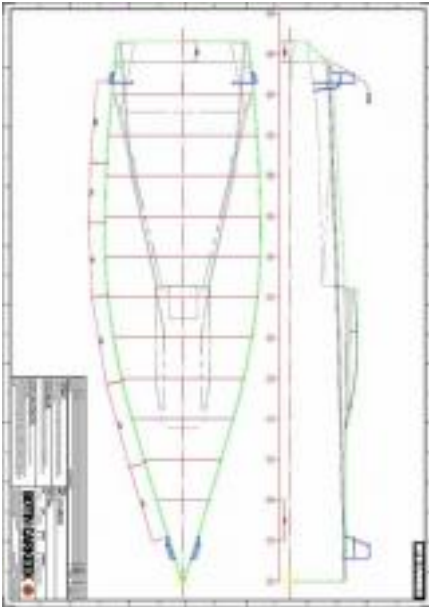
Tel.: (+34) 934 186 632

Mobile: (+34) 616 420 634

E-Mail: [info@cruiser-racer.com](mailto:info@cruiser-racer.com)

# **C R U I S E R R A C E R**

[www.cruiser-racer.com](http://www.cruiser-racer.com)



# **C R U I S E R R A C E R**

[www.cruiser-racer.com](http://www.cruiser-racer.com)

Buscarons, 6. 08022 Barcelona (Spain)

Tel.: (+34) 934 186 632

Mobile: (+34) 616 420 634

E-Mail: [info@cruiser-racer.com](mailto:info@cruiser-racer.com)