

C R U I S E R R A C E R

www.cruiser-racer.com

-972-

Swan 45 - ELU

SOLD



C R U I S E R R A C E R

www.cruiser-racer.com

Buscarons, 6. 08022 Barcelona (Spain)

Tel.: (+34) 934 186 632

Mobile: (+34) 616 420 634

E-Mail: info@cruiser-racer.com

GENERAL	
Name	Swan 45 - ELU
Model	Swan 45
Type	CRUISER-RACER
Year	2002
Hull Material	GRP
Flag	SPAIN
Sail Number	ESP 6491
Color	White
Lying	SPAIN
Price	340000
Vat	PAID
Slogan	One Design winner in ORC & IRC
General Notes	<p>The Swan 45 is a modern classic and one of the most aesthetically appealing yachts ever conceived. Hugely successful on the international regatta circuit over the past decade, these yachts are more popular than ever and have become the iconic performance cruiser. Nautor's Swan 45 is an excellent example of this hugely successful one design fleet, built as a Two Cabin version with twin heads and a large sail locker accessed from the cockpit. Since her delivery she has only been used for class racing hence her interior is in excellent condition. This Swan 45 has been professionally maintained by a full-time skipper. She has benefited from significant upgrades and continuous maintenance. She is fully optimised for Swan Class racing and can be quickly converted into full IRC mode, in which she has won several coveted prizes. In her current ownership she has had the hull, keel and rudder filled and faired utilising Swan Class templates, the anti-foul has been sprayed to a fine racing finish, the rudder bearings have been upgraded also giving a superior feel to the helm. The Rod rigging has been professionally inspected and replaced as necessary and all mast boom and spars repainted regularly. Batteries, charging and shore power have all been upgraded to allow for offshore events, and an inverter system is installed to power the navigation and raceware IT systems. The twin groove race forestay foil can be swiftly and easily switched to the roller furling foil for delivery and cruising. Swan 45 Elu also benefits from a triple reef main for short-handed sailing and delivery trips. She still has everything it takes to be competitive in the Swan 45 one-design class and IRC / ORC Classes and is offered for sale at a very attractive price. A steel shipping container is available (Lying Scotland) fully fitted with power lighting and racking for sail and spares storage to one side and a workbench to the opposite.</p>

GENERAL

Final Notes	<ul style="list-style-type: none"> - Carbon steering wheel - Main companionway sliding hatch garage flush with coach roof.. - 4 pcs footsteps in cockpit - Stainless steel pushpit, pulpit and stanchions with 600 mm high life lines - Composite mast collar - Grab rails each side of companionway - Headstay attachment on stemhead - Folding eyes for harness attachment in cockpit Pad eyes for safety lines, - Wichard 6504, 3 pcs Pad eye for outboard sheeting, - Wichard 6505 Harken aluminum jib and main sheet tracks - Two separate lockers to be mounted in cockpit for cruising. - Harken blocks - Spinlock jammers (partly upgraded (2016) - Anchor windlass Ocean 1 Gypsy only, 12V not fitted - Original sprayhood and Bimini
--------------------	---

DESIGN

Builder	Nautor
Designer	Germán Frers
Shipyard	Nautor's Swan

DIMENSIONS

Loa	14.00 m
Lwl	12.07 m
Beam	3.91 m
Draft	2.80 m
Ballast	3910 kg
Displacement	9850 kg

ENGINES

Engines	Volvo Penta D2-75 55Kw
Cruising Speed	7,5 kn
Propeller	Racing propeller

ENGINES

Notes	<ul style="list-style-type: none"> - New engine tail 2022 - Complete engine revision - Change of all elements.
--------------	---

TANKAGE

Fuel	150 l
Water	330 l
Notes	<p>-PLUMBING SYSTEMS</p> <p>-Fresh water 330 li in polythene tank consisting of three interconnected compartments.</p> <p>Johnson pump aqua jet water pressure system. Pressurized hot and cold water with a backup foot pump for fresh water, single lever mixing faucets.</p> <p>Sea-water spout with foot pump in galley, Y-valve in forward head.</p> <p>Drinking water purifier</p> <p>Polythene holding tank 60 li with level indication for forward toilet. Manual toilet discharging to holding tank.</p> <p>Tank emptied by hand pump or deck suction Bilge pumps, two manual and one electric.</p> <p>Isotemp water heater 22 li Isotherm Compact magnum Whale Gusher pump 10 MK3 pump</p> <p>Whale Gulper 220 Shower/Galley Waste and bilge pump Whale Gusher bilge pump Jabsco model 36740- series</p> <p>Level indicators for fuel and water tanks</p> <p>Composite sea cocks for all through hull fitting below waterline. Sea water for toilet flushing.</p> <p>Engine space air inlet from deck, outlet with blower to transom</p> <p>.- DRAINAGE SYSTEM</p> <p>Whale Gulper 220 Shower/Galley Waste and bilge pump Whale Gusher bilge pump Jabsco model 36740- series</p> <p>The holding tank is emptied by hand pump or deck suction.</p> <p>Bilge pumps, two manual and one electric.</p> <p>Cockpit scupper drains.</p>

GALLEY

Hot Water	Yes
Coolbox	Top Loading Freezer
Refrigerator	Front loading refrigerator 70 lt.

GALLEY

Water System	Yes
Notes	<ul style="list-style-type: none"> - Gimballled two burner stove with oven, protected by stainless steel guard - Stainless steel double sinks with fresh water tap, Corian Cameo white counter tops and sink cover - Bathroom pumps-2023 - Antifouling - Auust 2023

INSTRUMENTS

Electronics	B&G Hydra 3000
Gps	yes
Vhf	Shipmate RS8400 GPS
Automatic Pilot	Yes
Plotter	Yes
Notes	<ul style="list-style-type: none"> - New VHS 2023 - New plotter 2023 - B&G Hydra to a full B&G Hercules unit Pordesk on deck screen running Deckman for Windows Compass D- 135, mounted on navigation pedestal B&G direction instruments, Halycon Gyro Stabilised Compass, Full Race / Performance package with upgraded H3000 processor 4 x 20/20's on mast 2 FFD's in Cockpit and 1 at blueprint desk. 2 Analog gust displays. - Autopilot, DISPLAY Y CPU H3000 -PK-ACP-2 with water power pump PMP-T2-12V and Hynautic K2B cylinder.

ELECTRICAL

Batteries Number	3
Battery Charger	Battery charger mass 12/80
Notes	<ul style="list-style-type: none"> - New service batteries 202 - Victron 3500 inverter/charger - 12 DC insulated return system for lighting and general service - Main switchboard 12 V DC outboard of chart table - Shore power inlet 220 V -

SPARS & RIGGING	
Sails	<p>SAILS 2023 We have a full sail upgrade available for you.</p> <p>MAINSAIL NORTH SAILS:YEAR 2022 /MATERIAL:3DI / STATE:NEW / MEASURE:SC 45 /REGATTA:INSHORE ULTIMATE SAILS:YEAR 2018/MATERIAL:MEMBRANE/STATE:LIGHT-MEDIUM--70% LIVE/MEASURE:SC 45/REGATTA:INSHORE ULTIMATE SAILS: YEAR 2018/MATERIAL:MEMBRANE/STATE:NEW/MEASURE:SC 45/REGATTA:OFFSHORE JIB NORTH SAILS-J1:YEAR 2022/MATERIAL:3DI/STATE:NEW/MEASURES:SC 45/REGATTA:INSHORE NORTH SAILS-J2:YEAR 2022/MATERIAL:3DI/STATE:NEW /MEASURES:SC 45/REGATTA:INSHORE ULTIMATE SAILS-J1:YEAR 2018/MATERIAL:MEMBRANE/STATE:LIGHT-MEDIUM--70% LIVE/MEASURES:SC 45/REGATTA:INSHORE ULTIMATE SAILS-J2:YEAR 2018 /MATERIAL:MEMBRANE MEDIUM--70% LIVE/MEASURES:SC 45/REGATTA:INSHORE ULTIMATE SAILS-J3:YEAR 2018/MATERIAL:MEMBRANE 70% LIVE/MEASURES:SC 45/REAGATTA:INSHORE ULTIMATE SAILS-J4:YEAR 2018/MATERIAL:MEMBRANE 70% LIVE/MEASURES:SC 45/REGATTA:INSHORE</p>
Rigging	Navtec rod rigging with discontinuous shrouds
Mast	Hall Spars Carbon
Boom	Hall Spars Carbon
Vang	Mechanical vang
Spinnaker Pole	Carbon
Tuff Luff	Forestay with Tuff luff 2nd forestay with furler Navtec system 50
Running Rigging	Dyneema
Furling System	Yes

SPARS & RIGGING

Notes	<ul style="list-style-type: none"> - Hall Spars Carbon fibre double spreader 15/16 fractional rig, swept 20 degrees - IRC Carbon fibre spinnaker pole - Hydraulic backstay adjustment, with control panel each side in cockpit. - Backstay pumps – upgraded to two speed operations, to pump the backstay down faster. - Forestay with Tuff luff 2nd forestay with furler Navtec system 50
--------------	---

DECK

Deck Hardware	LEWMAR
Winches	Lewmar Grand Prix
Hatches	Lewmar
Notes	<ul style="list-style-type: none"> - Advanced laminate sandwich deck with Sprint prepeg skins and low density closed cell foam core. Teak in cockpit and side decks, 30 mm high toe rails forward of mast Custom jib lead line inlets in cockpit Carbon navigation wheel. - Main companionway sliding hatch garage flush with coach roof and Esthec details. - 4 pcs footsteps in cockpit stainless steel pushpit, pulpit and stanchions with 600 mm high life lines Composite mast collar. Grab rails each side of companionway. - Lewmar Grand prix winch option instead of standard: Primary winch Lewmar 60/3 AOR Halyard B 48.3 Halyard winch Lewmar 48 STOR-SR

SAFETY

Ce Registration	Category 'A' Ocean - CE
Fire Extinguishers	Yes
Epirb	Yes
Liferaft	Yes
Notes	Complete

CONSTRUCTION	
Notes	<p>Glass/ vinylester laminate with carbon reinforcement in selected area. Sandwich topside and single skin bottom fiber reinforcement are multiaxial or unidirectional. Structural bulkquantity are of veneered sandwich development or marina grade waterproof plywood. Bottom stiffeners are reinforced with unidirectional carbon and multiaxial glass fibre in selected areas.</p> <p>Antimony alloyed lead bulb and fin with upper flange recessed into body. Fin bolted to body with high tensile steel bolts. Deep floors inside, possibility for 400 Kg keel weight adjustment by removable lead pigs about 50 Kg each inside bulb. Foam filled rudder with carbon/epoxy stock.</p> <p>- TEAK TREATMENT-2023 - JARCIA INSPECTION - NDT—ULTRASOUND OF TERMINALS—2022</p>

ACCOMODATIONS	
Berths Number	5
Cabins Number	2
Bath Shower	Yes

EXTRA NOTES	
Radio Cd	Sony XR C5200R
Speakers Cockpit	Two loudspeakers Poly-Planer 905
Shower Cockpit	Yes
Swimming Ladder	Yes
Extra Notes	Loudspeakers in cockpit, Sony XS-MP-61

C R U I S E R R A C E R

www.cruiser-racer.com



C R U I S E R R A C E R

www.cruiser-racer.com

Buscarons, 6. 08022 Barcelona (Spain)

Tel.: (+34) 934 186 632

Mobile: (+34) 616 420 634

E-Mail: info@cruiser-racer.com

C R U I S E R R A C E R

www.cruiser-racer.com



C R U I S E R R A C E R

www.cruiser-racer.com

Buscarons, 6. 08022 Barcelona (Spain)

Tel.: (+34) 934 186 632

Mobile: (+34) 616 420 634

E-Mail: info@cruiser-racer.com

C R U I S E R R A C E R

www.cruiser-racer.com



C R U I S E R R A C E R

www.cruiser-racer.com

Buscarons, 6. 08022 Barcelona (Spain)

Tel.: (+34) 934 186 632

Mobile: (+34) 616 420 634

E-Mail: info@cruiser-racer.com

C R U I S E R R A C E R

www.cruiser-racer.com



C R U I S E R R A C E R

www.cruiser-racer.com

Buscarons, 6. 08022 Barcelona (Spain)

Tel.: (+34) 934 186 632

Mobile: (+34) 616 420 634

E-Mail: info@cruiser-racer.com

C R U I S E R R A C E R

www.cruiser-racer.com



C R U I S E R R A C E R

www.cruiser-racer.com

Buscarons, 6. 08022 Barcelona (Spain)

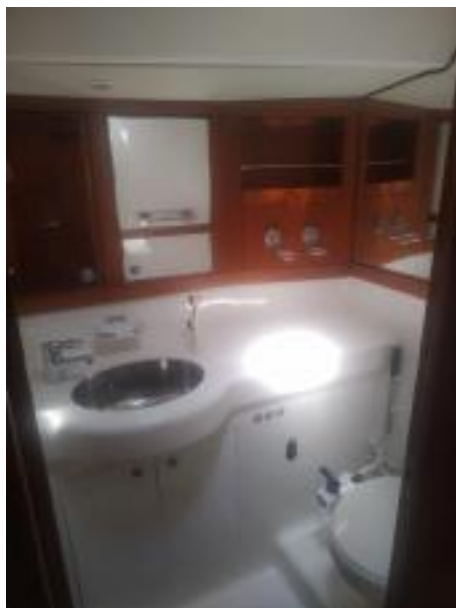
Tel.: (+34) 934 186 632

Mobile: (+34) 616 420 634

E-Mail: info@cruiser-racer.com

C R U I S E R R A C E R

www.cruiser-racer.com



C R U I S E R R A C E R

www.cruiser-racer.com

Buscarons, 6. 08022 Barcelona (Spain)

Tel.: (+34) 934 186 632

Mobile: (+34) 616 420 634

E-Mail: info@cruiser-racer.com

C R U I S E R R A C E R

www.cruiser-racer.com



C R U I S E R R A C E R

www.cruiser-racer.com

Buscarons, 6. 08022 Barcelona (Spain)

Tel.: (+34) 934 186 632

Mobile: (+34) 616 420 634

E-Mail: info@cruiser-racer.com

C R U I S E R R A C E R

www.cruiser-racer.com



C R U I S E R R A C E R

www.cruiser-racer.com

Buscarons, 6. 08022 Barcelona (Spain)

Tel.: (+34) 934 186 632

Mobile: (+34) 616 420 634

E-Mail: info@cruiser-racer.com

C R U I S E R R A C E R

www.cruiser-racer.com



C R U I S E R R A C E R

www.cruiser-racer.com

Buscarons, 6. 08022 Barcelona (Spain)

Tel.: (+34) 934 186 632

Mobile: (+34) 616 420 634

E-Mail: info@cruiser-racer.com