

# **C R U I S E R R A C E R**

[www.cruiser-racer.com](http://www.cruiser-racer.com)

**-1012-**

## **Sunseeker 57 Predator**

### **FOR SALE**



# **C R U I S E R R A C E R**

[www.cruiser-racer.com](http://www.cruiser-racer.com)

Buscarons, 6. 08022 Barcelona (Spain)

Tel.: (+34) 934 186 632

Mobile: (+34) 616 420 634

E-Mail: [info@cruiser-racer.com](mailto:info@cruiser-racer.com)

# C R U I S E R R A C E R

www.cruiser-racer.com

GENERAL	
<b>Name</b>	Sunseeker 57 Predator
<b>Model</b>	Sunseeker 57
<b>Type</b>	CRUISER
<b>Year</b>	2016
<b>Hull Material</b>	GRP
<b>Flag</b>	FINLAND
<b>Color</b>	White with black stripe and windows
<b>Lying</b>	Turku
<b>Price</b>	1170000
<b>Vat</b>	PAID
<b>Slogan</b>	Nice condition ready to go
<b>General Notes</b>	The yacht is in excellent condition. The yacht is a spacious three sleeping cabin plus crew cabin version with two heads including separate showers. She has been stored annually at least months in the warm shed and professionally serviced annually. She has been launched first time in 2017. Flagged into Finland and VAT paid. She has been cruising only in the Baltic Sea area, with less salt and UV-light. Lot of images and videos existing by request. One owner since new.
<b>Final Notes</b>	Annual inspection and services done since new.

DIMENSIONS	
<b>Loa</b>	18.24 m
<b>Beam</b>	5.70 m
<b>Draft</b>	1.56 m
<b>Displacement</b>	29400 kg

ENGINES	
<b>Engines</b>	Volvo Penta D13
<b>Hours</b>	580

# C R U I S E R R A C E R

www.cruiser-racer.com

Buscarons, 6. 08022 Barcelona (Spain)

Tel.: (+34) 934 186 632

Mobile: (+34) 616 420 634

E-Mail: info@cruiser-racer.com

<b>ENGINES</b>	
<b>Notes</b>	2 x Volvo Penta D13 900 (2x900hp) Year 2016 Shaft driven

<b>TANKAGE</b>	
<b>Fuel</b>	2200 l
<b>Water</b>	600 l
<b>Holding</b>	136 l

<b>GALLEY</b>	
<b>Notes</b>	Galley: <ul style="list-style-type: none"> <li>• Interior AC 220V sockets</li> <li>• Hansgrohe Galley mixer Tap, Focus S in polished chrome</li> <li>• Waeco Coolmatic Refrigerator with freezer compartment HDC-155FF</li> <li>• Ceramic Hob 240V Plastimo touch control 4 ring 230V</li> <li>• Hob Extractor fan, Bosch DHL 535B</li> <li>• Integrated combination oven, microwave oven and grill function, Bosch HBC84E653B</li> <li>• Stainless steel square bezel LED interior overhead lighting with dimmer, Quick Blake XP</li> <li>• Galley &amp; Lower Saloon top locker doors are sprayed Silver Metallic lacquer, Gloss finish</li> <li>• Integrated dish washer.</li> </ul>

<b>INSTRUMENTS</b>	
<b>Electronics</b>	Simrad
<b>Gps</b>	Simrad GS25
<b>Vhf</b>	Simrad RS90
<b>Automatic Pilot</b>	Simrad QS80
<b>Plotter</b>	2 x Simrad NSS16
<b>Radar</b>	Simrad TX-06

# CRUISER RACER

www.cruiser-racer.com

## INSTRUMENTS

INSTRUMENTS	
Notes	<p><b>Helm Console:</b></p> <ul style="list-style-type: none"><li>• Instruments cover, Stamoid Light – black color</li><li>• Switch and Socket trims in Black Chrome, Vimar Classic</li><li>• Piano Black effect console panels</li><li>• 2 x Simrad NSS16 evo2 multifunction touch screen chartplotter displays</li><li>• Simrad GS25 GPS</li><li>• Simrad IS40 Speed/Depth instruments</li><li>• Simrad BSM-1 fishfinder Sounder module</li><li>• Airmar B744V depth/speed/temperature transducer</li><li>• Simrad QS80 autopilot controller display via NSS16, AC12 with shaft, Volvo intragrated</li><li>• Simrad TX-06S 5kW 4 foot open array radar scanner</li><li>• Simrad RS90 VHF DSC radio</li><li>• Simrad NAIS 400 Class B Transponder</li><li>• Simrad Go-Free wireless bridge to control the NSS from your iPad or iPhone</li><li>• Searchlight – Jabsco Single Beam single station control</li><li>• Volvo Penta twin 2.5” LCD displays for shaft engines</li><li>• Compass Swinging and adjustment with correction card</li><li>• Yacht Controller Dual Band, VOP-EVC-D,E – wireless mooring controller</li><li>• Fusion NRX200i zone remote</li></ul> <p><b>Other Electronics:</b></p> <ul style="list-style-type: none"><li>• Bow Thruster, Sleipner Side-Power SEP 170/250T-24V - 10,7hp</li><li>• Stern Thruster, Sleipner Side-Power SEP100/185-24V – 8,4hp</li><li>• Horn, AFI Duel Trumpet – XLPD/24V</li><li>• Service batteries 6 x Exide ER550 115Ah - 2021</li></ul>

## ELECTRICAL

ELECTRICAL	
Generator	Onan 11kw 50hz
Notes	Generator hours 117h

## SPARS & RIGGING

SPARS & RIGGING	
Sails	no

# CRUISER RACER

www.cruiser-racer.com

Buscarons, 6. 08022 Barcelona (Spain)

Tel.: (+34) 934 186 632

Mobile: (+34) 616 420 634

E-Mail: info@cruiser-racer.com

**DECK**

**Notes**

- Windscreen cover in black mesh
  - Fresh water deck wash system outlet
  - Electric windlass, Lewmar V5GD-24V with remote control
  - Delta anchor 25kg with 90m galvanized 9,5mm anchor chain
  - Sunbathing cushions with folding back rests in Sunbrella – Cadet Grey
  - Third zone Fusion NRX200i zone remote and 4" Fusion MS-FR402 marine speakers
  - Low level LED side deck lights 8 per side in white
  - Extra LED lights on the aft stairs
  - Railing opened from the bow with integrated bow steps
- Platform:
- Hydraulic 3 stage gangway in stainless steel and teak walkway, Besenconi
  - Hydraulic lifting swimming platform with max. lift capacity of 450kg
  - Folding stainless steel bathing ladder
  - Tender recovery roller system for Willams RIB Turbojet 325
  - Fresh water deck wash system outlet
  - Hand held swimming shower, Whale twister
  - 220V AC 63 Amps shorepower with 20m cable
  - Underwater lights, Aqualuma LED wide angle x 4 in white
- Cockpit:
- Rear cover with windows in Sunbrella Plus, Jet Black color
  - Electric bimini/canopy for aft cockpit in Sunbrella plus, Jet Black color
  - Electric sliding glass cockpit door with drow down mechanism at seating to fully open the cockpit space
  - Water purifier for ice maker – General Ecology QC1
  - Icemaker Vitrifrigo
  - Refrigerator Waeco CR50 fitted in wet bar
  - Additional pair 10" Oval Mooring Cleats fitted to the aft lower edge of the hull band facing aft
  - Stainless steel flagpole and socket
  - Fresh water marina connection pressure regulator
  - Teak decking for the aft cockpit
  - Teak table with folding top fitted on a polished stainless steel leg
  - Second zone from Deck Saloon with Fusion NRX200i zone remote and four 7" Fusion MS FR702 marine speakers with Fusion FM504 4-channel amplifier
  - Kenyon Marine Electric BBQ Grill
  - Stern docking winches, Lewmar C3 fitted port and starboard
  - Stainless steel round bezel LED interior overhead lighting with dimmer function, Quick Kia
  - Extra LED floor lightin

**C R U I S E R**  
**R A C E R**  
www.cruiser-racer.com

<b>SAFETY</b>	
<b>Liferaft</b>	yes
<b>Notes</b>	Fenders Mooring lines Owner's manuals VAT certificate Declaration of Conformity Full service documentation

<b>ACCOMODATIONS</b>	
<b>Berths Number</b>	2 double + 1 simple
<b>Cabins Number</b>	2 doubles + 1 simple
<b>Bath Shower</b>	Yes
<b>Air Conditioning</b>	2 x 16000btu VTD

**C R U I S E R**  
**R A C E R**  
www.cruiser-racer.com

Buscarons, 6. 08022 Barcelona (Spain)

Tel.: (+34) 934 186 632

Mobile: (+34) 616 420 634

E-Mail: info@cruiser-racer.com

# C R U I S E R R A C E R

www.cruiser-racer.com

## ACCOMODATIONS

ACCOMODATIONS	
Notes	<p><b>Lower Saloon:</b></p> <ul style="list-style-type: none"> <li>• Interior AC 220V sockets – Euro 2 pin</li> <li>• Square style cabin door handle in Polished Chrome finish</li> <li>• Cabinet catches in Polished Stainless Steel</li> <li>• Switch and Socket trims in Black Chrome, Vimar Classic</li> <li>• Air Conditioning 1 x 8000btu VTD</li> <li>• Samsung 22" TV</li> <li>• Fusion MS-AV700i DVD/CD/Radio with Bluetooth module MS-BT200 and Fusion PP-FR652</li> </ul> <p>stereo speakers and infrared remote eye</p> <ul style="list-style-type: none"> <li>• Stainless steel square bezel LED interior overhead lighting with dimmer, Quick Blake XP</li> <li>• A fold-down table for the accommodation for two.</li> </ul> <p><b>Master Cabin:</b></p> <ul style="list-style-type: none"> <li>• Interior AC 220V sockets – Euro 2 pin</li> <li>• Square style cabin door handle in Polished Chrome finish</li> <li>• Cabinet catches in Polished Stainless Steel</li> <li>• Switch and Socket trims in Black Chrome, Vimar Classic</li> <li>• Standard foam and quilted mattress for bed</li> <li>• Air Conditioning 1 x 12000btu TVE + Condenser for split gas</li> <li>• Samsung 40" TV</li> <li>• Fusion MS-AV700i DVD/CD/Radio with Bluetooth module MS-BT200 and Fusion PP-FR652</li> </ul> <p>stereo speakers and infrared remote eye</p> <ul style="list-style-type: none"> <li>• Stainless steel square bezel LED interior overhead lighting with dimmer, Quick Blake XP</li> <li>• Flexible arm Polished Chore reading lights, Quick Audrey</li> <li>• Dometic Safe Box MD 281C hidden in cabinetry</li> <li>• Tempur luxurious mattress topper</li> <li>• Option for two chairs and a table or one kids bed</li> </ul> <p><b>Master Cabin Toilet and Shower Compartment</b></p> <ul style="list-style-type: none"> <li>• Switch and Socket trims in Black Chrome, Vimar Classic</li> <li>• Hansgrohe en-suite Taps and Accessories in Polished Chrome</li> <li>• Air conditioning Outlet</li> <li>• Sealand 8600 series 24V toilet</li> <li>• Stainless steel square bezel LED interior overhead lighting with dimmer, Quick Blake XP.</li> </ul>

## EXTRA NOTES

Television	yes
Radio Cd	yes
Speakers Cockpit	yes

# C R U I S E R R A C E R

www.cruiser-racer.com

Buscarons, 6. 08022 Barcelona (Spain)

Tel.: (+34) 934 186 632

Mobile: (+34) 616 420 634

E-Mail: info@cruiser-racer.com

# CRUISER RACER

www.cruiser-racer.com

## EXTRA NOTES

### Extra Notes

#### Deck Saloon:

- Interior wood is Black American Walnut – Satin finish
- AC 220V sockets – Euro 2 pin
- Switch and socket trims in Black Chrome, Vimar Classic
- Air Conditioning 2 x 16000btu VTD
- Samsung 40" TV on a fall and rise system
- CD/Radio Fusion MS-AV700i with Bluetooth module MS-BT200 and Fusion PP-FR652 stereo speakers
- Electric cooling unit for top loading cool box, Coolmatic TBSC-100 chiller
- Stainless steel round bezel LED interior overhead lighting with dimmer function, Quick Kia
- Extra low level LED lights
- Cabinet catches in polished stainless steel
- Wifi route

#### Starboard Mid Cabin

- Interior AC 220V sockets – Euro 2 pin
- Square style cabin door handle in Polished Chrome finish
- Cabinet catches in Polished Stainless Steel
- Switch and Socket trims in Black Chrome, Vimar Classic
- Standard foam and quilted mattress for bed
- Air Conditioning 1 x 6000btu VTD
- Samsung 22" TV
- Fusion MS-AV700i DVD/CD/Radio with Bluetooth module MS-BT200 and Fusion PP-FR652 stereo speakers and infrared remote eye
- Stainless steel square bezel LED interior overhead lighting with dimmer, Quick Blake XP
- Flexible arm Polished Chore reading lights, Quick Audrey
- Stairs to the upper bed, manufactured separately

#### Crew Quarters

- Interior AC 220V sockets – Euro 2 pin
- Switch and Socket trims in Black Chrome, Vimar Classic
- Standard foam and quilted mattress for beds
- Stainless steel square bezel LED interior overhead lighting, Quick Blake XP
- Sink and toilet

#### Forward Toilet and Shower Compartment

- Switch and Socket trims in Black Chrome, Vimar Classic
- Hansgrohe en-suite Taps and Accessories in Polished Chrome
- Air conditioning Outlet
- Sealand 8600 series 24V toilet
- Stainless steel square bezel LED interior overhead lighting with dimmer, Quick Blake XP

# CRUISER RACER

www.cruiser-racer.com

Buscarons, 6. 08022 Barcelona (Spain)

Tel.: (+34) 934 186 632

Mobile: (+34) 616 420 634

E-Mail: info@cruiser-racer.com



# **C R U I S E R R A C E R**

[www.cruiser-racer.com](http://www.cruiser-racer.com)



# **C R U I S E R R A C E R**

[www.cruiser-racer.com](http://www.cruiser-racer.com)

**Buscarons, 6. 08022 Barcelona (Spain)**

**Tel.: (+34) 934 186 632**

**Mobile: (+34) 616 420 634**

**E-Mail: [info@cruiser-racer.com](mailto:info@cruiser-racer.com)**

# **C R U I S E R R A C E R**

[www.cruiser-racer.com](http://www.cruiser-racer.com)



# **C R U I S E R R A C E R**

[www.cruiser-racer.com](http://www.cruiser-racer.com)

Buscarons, 6. 08022 Barcelona (Spain)

Tel.: (+34) 934 186 632

Mobile: (+34) 616 420 634

E-Mail: [info@cruiser-racer.com](mailto:info@cruiser-racer.com)

# **C R U I S E R R A C E R**

[www.cruiser-racer.com](http://www.cruiser-racer.com)



# **C R U I S E R R A C E R**

[www.cruiser-racer.com](http://www.cruiser-racer.com)

Buscarons, 6. 08022 Barcelona (Spain)

Tel.: (+34) 934 186 632

Mobile: (+34) 616 420 634

E-Mail: [info@cruiser-racer.com](mailto:info@cruiser-racer.com)

# **C R U I S E R R A C E R**

[www.cruiser-racer.com](http://www.cruiser-racer.com)



# **C R U I S E R R A C E R**

[www.cruiser-racer.com](http://www.cruiser-racer.com)

Buscarons, 6. 08022 Barcelona (Spain)

Tel.: (+34) 934 186 632

Mobile: (+34) 616 420 634

E-Mail: [info@cruiser-racer.com](mailto:info@cruiser-racer.com)

# CRUISER RACER

[www.cruiser-racer.com](http://www.cruiser-racer.com)



# CRUISER RACER

[www.cruiser-racer.com](http://www.cruiser-racer.com)

Buscarons, 6. 08022 Barcelona (Spain)

Tel.: (+34) 934 186 632

Mobile: (+34) 616 420 634

E-Mail: [info@cruiser-racer.com](mailto:info@cruiser-racer.com)

# **C R U I S E R R A C E R**

[www.cruiser-racer.com](http://www.cruiser-racer.com)



# **C R U I S E R R A C E R**

[www.cruiser-racer.com](http://www.cruiser-racer.com)

Buscarons, 6. 08022 Barcelona (Spain)

Tel.: (+34) 934 186 632

Mobile: (+34) 616 420 634

E-Mail: [info@cruiser-racer.com](mailto:info@cruiser-racer.com)

# **C R U I S E R R A C E R**

[www.cruiser-racer.com](http://www.cruiser-racer.com)



# **C R U I S E R R A C E R**

[www.cruiser-racer.com](http://www.cruiser-racer.com)

Buscarons, 6. 08022 Barcelona (Spain)

Tel.: (+34) 934 186 632

Mobile: (+34) 616 420 634

E-Mail: [info@cruiser-racer.com](mailto:info@cruiser-racer.com)

# **C R U I S E R R A C E R**

[www.cruiser-racer.com](http://www.cruiser-racer.com)



# **C R U I S E R R A C E R**

[www.cruiser-racer.com](http://www.cruiser-racer.com)

Buscarons, 6. 08022 Barcelona (Spain)

Tel.: (+34) 934 186 632

Mobile: (+34) 616 420 634

E-Mail: [info@cruiser-racer.com](mailto:info@cruiser-racer.com)



# **C R U I S E R R A C E R**

[www.cruiser-racer.com](http://www.cruiser-racer.com)



# **C R U I S E R R A C E R**

[www.cruiser-racer.com](http://www.cruiser-racer.com)

Buscarons, 6. 08022 Barcelona (Spain)

Tel.: (+34) 934 186 632

Mobile: (+34) 616 420 634

E-Mail: [info@cruiser-racer.com](mailto:info@cruiser-racer.com)

# **C R U I S E R R A C E R**

[www.cruiser-racer.com](http://www.cruiser-racer.com)



# **C R U I S E R R A C E R**

[www.cruiser-racer.com](http://www.cruiser-racer.com)

Buscarons, 6. 08022 Barcelona (Spain)

Tel.: (+34) 934 186 632

Mobile: (+34) 616 420 634

E-Mail: [info@cruiser-racer.com](mailto:info@cruiser-racer.com)

# **C R U I S E R R A C E R**

[www.cruiser-racer.com](http://www.cruiser-racer.com)



# **C R U I S E R R A C E R**

[www.cruiser-racer.com](http://www.cruiser-racer.com)

Buscarons, 6. 08022 Barcelona (Spain)

Tel.: (+34) 934 186 632

Mobile: (+34) 616 420 634

E-Mail: [info@cruiser-racer.com](mailto:info@cruiser-racer.com)

# **C R U I S E R R A C E R**

[www.cruiser-racer.com](http://www.cruiser-racer.com)



# **C R U I S E R R A C E R**

[www.cruiser-racer.com](http://www.cruiser-racer.com)

Buscarons, 6. 08022 Barcelona (Spain)

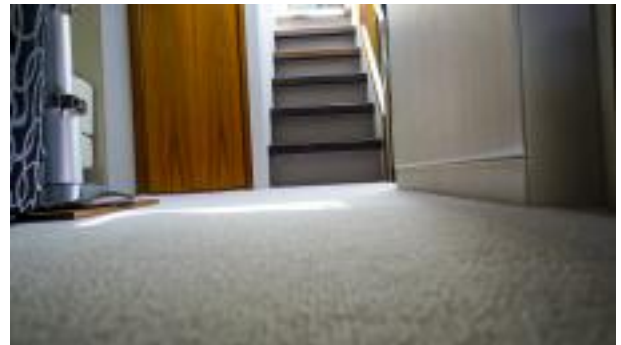
Tel.: (+34) 934 186 632

Mobile: (+34) 616 420 634

E-Mail: [info@cruiser-racer.com](mailto:info@cruiser-racer.com)

# **C R U I S E R R A C E R**

[www.cruiser-racer.com](http://www.cruiser-racer.com)



# **C R U I S E R R A C E R**

[www.cruiser-racer.com](http://www.cruiser-racer.com)

**Buscarons, 6. 08022 Barcelona (Spain)**

**Tel.: (+34) 934 186 632**

**Mobile: (+34) 616 420 634**

**E-Mail: [info@cruiser-racer.com](mailto:info@cruiser-racer.com)**

# **C R U I S E R R A C E R**

[www.cruiser-racer.com](http://www.cruiser-racer.com)



# **C R U I S E R R A C E R**

[www.cruiser-racer.com](http://www.cruiser-racer.com)

Buscarons, 6. 08022 Barcelona (Spain)

Tel.: (+34) 934 186 632

Mobile: (+34) 616 420 634

E-Mail: [info@cruiser-racer.com](mailto:info@cruiser-racer.com)

**C R U I S E R**  
**R A C E R**  
[www.cruiser-racer.com](http://www.cruiser-racer.com)



**C R U I S E R**  
**R A C E R**  
[www.cruiser-racer.com](http://www.cruiser-racer.com)

Buscarons, 6. 08022 Barcelona (Spain)

Tel.: (+34) 934 186 632

Mobile: (+34) 616 420 634

E-Mail: [info@cruiser-racer.com](mailto:info@cruiser-racer.com)

# **C R U I S E R R A C E R**

[www.cruiser-racer.com](http://www.cruiser-racer.com)



# **C R U I S E R R A C E R**

[www.cruiser-racer.com](http://www.cruiser-racer.com)

Buscarons, 6. 08022 Barcelona (Spain)

Tel.: (+34) 934 186 632

Mobile: (+34) 616 420 634

E-Mail: [info@cruiser-racer.com](mailto:info@cruiser-racer.com)



# **C R U I S E R R A C E R**

[www.cruiser-racer.com](http://www.cruiser-racer.com)



# **C R U I S E R R A C E R**

[www.cruiser-racer.com](http://www.cruiser-racer.com)

Buscarons, 6. 08022 Barcelona (Spain)

Tel.: (+34) 934 186 632

Mobile: (+34) 616 420 634

E-Mail: [info@cruiser-racer.com](mailto:info@cruiser-racer.com)

# **C R U I S E R R A C E R**

[www.cruiser-racer.com](http://www.cruiser-racer.com)



# **C R U I S E R R A C E R**

[www.cruiser-racer.com](http://www.cruiser-racer.com)

Buscarons, 6. 08022 Barcelona (Spain)

Tel.: (+34) 934 186 632

Mobile: (+34) 616 420 634

E-Mail: [info@cruiser-racer.com](mailto:info@cruiser-racer.com)

# **C R U I S E R R A C E R**

[www.cruiser-racer.com](http://www.cruiser-racer.com)



# **C R U I S E R R A C E R**

[www.cruiser-racer.com](http://www.cruiser-racer.com)

Buscarons, 6. 08022 Barcelona (Spain)

Tel.: (+34) 934 186 632

Mobile: (+34) 616 420 634

E-Mail: [info@cruiser-racer.com](mailto:info@cruiser-racer.com)

# **C R U I S E R R A C E R**

[www.cruiser-racer.com](http://www.cruiser-racer.com)



# **C R U I S E R R A C E R**

[www.cruiser-racer.com](http://www.cruiser-racer.com)

Buscarons, 6. 08022 Barcelona (Spain)

Tel.: (+34) 934 186 632

Mobile: (+34) 616 420 634

E-Mail: [info@cruiser-racer.com](mailto:info@cruiser-racer.com)

# **C R U I S E R R A C E R**

[www.cruiser-racer.com](http://www.cruiser-racer.com)



# **C R U I S E R R A C E R**

[www.cruiser-racer.com](http://www.cruiser-racer.com)

Buscarons, 6. 08022 Barcelona (Spain)

Tel.: (+34) 934 186 632

Mobile: (+34) 616 420 634

E-Mail: [info@cruiser-racer.com](mailto:info@cruiser-racer.com)

# **C R U I S E R R A C E R**

[www.cruiser-racer.com](http://www.cruiser-racer.com)



# **C R U I S E R R A C E R**

[www.cruiser-racer.com](http://www.cruiser-racer.com)

Buscarons, 6. 08022 Barcelona (Spain)

Tel.: (+34) 934 186 632

Mobile: (+34) 616 420 634

E-Mail: [info@cruiser-racer.com](mailto:info@cruiser-racer.com)

# CRUISER RACER

[www.cruiser-racer.com](http://www.cruiser-racer.com)



# CRUISER RACER

[www.cruiser-racer.com](http://www.cruiser-racer.com)

Buscarons, 6. 08022 Barcelona (Spain)

Tel.: (+34) 934 186 632

Mobile: (+34) 616 420 634

E-Mail: [info@cruiser-racer.com](mailto:info@cruiser-racer.com)

# **C R U I S E R R A C E R**

[www.cruiser-racer.com](http://www.cruiser-racer.com)



# **C R U I S E R R A C E R**

[www.cruiser-racer.com](http://www.cruiser-racer.com)

Buscarons, 6. 08022 Barcelona (Spain)

Tel.: (+34) 934 186 632

Mobile: (+34) 616 420 634

E-Mail: [info@cruiser-racer.com](mailto:info@cruiser-racer.com)



# **C R U I S E R R A C E R**

[www.cruiser-racer.com](http://www.cruiser-racer.com)



# **C R U I S E R R A C E R**

[www.cruiser-racer.com](http://www.cruiser-racer.com)

**Buscarons, 6. 08022 Barcelona (Spain)**

**Tel.: (+34) 934 186 632**

**Mobile: (+34) 616 420 634**

**E-Mail: [info@cruiser-racer.com](mailto:info@cruiser-racer.com)**