

# **C R U I S E R R A C E R**

[www.cruiser-racer.com](http://www.cruiser-racer.com)

**-1074-**

**X - 46 SANTA MARIA TERESA**

**FOR SALE**



# **C R U I S E R R A C E R**

[www.cruiser-racer.com](http://www.cruiser-racer.com)

Buscarons, 6. 08022 Barcelona (Spain)

Tel.: (+34) 934 186 632

Mobile: (+34) 616 420 634

E-Mail: [info@cruiser-racer.com](mailto:info@cruiser-racer.com)

# CRUISER RACER

www.cruiser-racer.com

GENERAL	
<b>Name</b>	X - 46 SANTA MARIA TERESA
<b>Model</b>	X-YACHTS 46
<b>Type</b>	CRUISER-RACER
<b>Year</b>	2005
<b>Hull Material</b>	GRP
<b>Flag</b>	PORTUGAL
<b>Sail Number</b>	POR-8339
<b>Color</b>	Dark Blue
<b>Lying</b>	PORTUGAL
<b>Price</b>	250000
<b>Vat</b>	PAID
<b>Slogan</b>	Very nice sailing yacht

DESIGN	
<b>Builder</b>	X-YACHTS
<b>Designer</b>	JEPPESEN

DIMENSIONS	
<b>Loa</b>	14.01 m
<b>Beam</b>	4.092 m
<b>Draft</b>	2.356 m
<b>Ballast</b>	4.500 kg
<b>Displacement</b>	10.246 kg

# CRUISER RACER

www.cruiser-racer.com

Buscarons, 6. 08022 Barcelona (Spain)

Tel.: (+34) 934 186 632

Mobile: (+34) 616 420 634

E-Mail: info@cruiser-racer.com

# C R U I S E R R A C E R

[www.cruiser-racer.com](http://www.cruiser-racer.com)

<b>ENGINES</b>	
<b>Engines</b>	Volvo Penta D2 – 55/S
<b>Cruising Speed</b>	7 kn
<b>Propeller</b>	folding propeller
<b>Notes</b>	<p>Volvo Penta D2 – 55/S 55hp diesel engine mounted on rubber suspension with S-drive installation and 460mm folding propeller. Engine is run with fresh water cooling system.</p> <p>Engine compartment Situated between the two aft cabins excellent access is provided through removing the sides and opening the companionway stair's top hinges. The engine compartment is insulated with special foam material and allows space for additional electrical equipment such as a generator. The compartment is fitted with two ventilation units as standard.</p>

<b>TANKAGE</b>	
<b>Fuel</b>	200 l
<b>Water</b>	380 l
<b>Notes</b>	<p>Holding tank with water pump forward toilet.</p> <p>Fuel tank 200-litre aluminum fuel tank with VDO analogue tank level gauge, deck fill, separator incl. filter and shut off valve.</p>

<b>GALLEY</b>	
<b>Hot Water</b>	yes
<b>Coolbox</b>	yes
<b>Refrigerator</b>	yes
<b>Water System</b>	yes

# C R U I S E R R A C E R

[www.cruiser-racer.com](http://www.cruiser-racer.com)

**Buscarons, 6. 08022 Barcelona (Spain)**

**Tel.: (+34) 934 186 632**

**Mobile: (+34) 616 420 634**

**E-Mail: [info@cruiser-racer.com](mailto:info@cruiser-racer.com)**

# C R U I S E R R A C E R

[www.cruiser-racer.com](http://www.cruiser-racer.com)

## GALLEY

<b>Notes</b>	<p>The well-equipped galley has a large work (130x55 cm deep) surface. The top opened GRP (150 l) cooling box with 100 mm insulation, cooled efficiently by a refrigerator unit, provides a large cold storage capacity.</p> <p>For hotter climates we recommend the seawater-cooled Isotherm SP (see extras). Twin stainless steel rectangular sinks (52x27 cm) with hot/cold water-mixing tabs are integrated in the white melamine-working surface. The s/s gimballed gas stove has 2 jets and an oven. A 3 kg gas bottle is stored in the aft cockpit locker.</p> <p><b>New micro-wave.</b></p> <p>Shelves, lockers with plexi glass sliding doors and 4 x drawers (35 cm wide) and 3 drawers (20 cm wide) give ample storage space for plates, cutlery, pans, cups and glasses etc.</p> <p>Further storage is available under the navigation table and sofa.</p>
--------------	---

## INSTRUMENTS

<b>Electronics</b>	Raymarine
<b>Gps</b>	Raymarine 7"
<b>Vhf</b>	Ray 240E VHF DSC-D
<b>Automatic Pilot</b>	ST290 Autopilot
<b>Plotter</b>	Raymarine 7" Radar / Chart plotter
<b>Radar</b>	Raymarine 7" Radar
<b>Notes</b>	<p>ST290 Wind repeater            ST290 Graphic display X 2            Ray 240E Dual station for cockpit Mounted at Nav station:            Ray 240E VHF DSC-D            7" Radar / Chart plotter including GPS sensor Processor, junction box, log and echo transducer            Mounted on Mast: ST290 Wind sensor            Sea Me Radar reflector with display at Nav Station            Mounted at Binnacle on Large instrument Box:            Raymarine 7" Radar / Plotter repeater with HSB cable ST290 Autopilot</p>

# C R U I S E R R A C E R

[www.cruiser-racer.com](http://www.cruiser-racer.com)

**Buscarons, 6. 08022 Barcelona (Spain)**

**Tel.: (+34) 934 186 632**

**Mobile: (+34) 616 420 634**

**E-Mail: [info@cruiser-racer.com](mailto:info@cruiser-racer.com)**

# C R U I S E R R A C E R

www.cruiser-racer.com

## ELECTRICAL

<b>Batteries Number</b>	3
<b>Battery Charger</b>	yes
<b>Notes</b>	Gel battery x 3 120 AH plus separate engine start battery 230 Mastervolt Mass 12v/60 A Battery charger Mass 12/2000 DC/AC inverter New Batteries, inverter and battery charger 2021

## SPARS & RIGGING

<b>Sails</b>	Main sail "One sails" 4Tforte from 2019 Main sail for cruising - Hood Genoa "One sails" 4Tforte from 2019 Genoa for cruising Symmetric Spinnaker - Velas Pires de Lima - 150m2 Asymmetric Spinnaker - North Sails Mainsail Cover
<b>Rigging</b>	Rod
<b>Mast</b>	Aluminium
<b>Boom</b>	Aluminium
<b>Vang</b>	yes
<b>Spinnaker Pole</b>	yes
<b>Running Rigging</b>	dynema
<b>Furling System</b>	Profurl
<b>Notes</b>	Steaming / deck floodlight Rod rigging replaced in 2021

## DECK

<b>Deck Hardware</b>	Ronstan - Frederiksen
<b>Winches</b>	Andersen
<b>Hatches</b>	yes

# C R U I S E R R A C E R

www.cruiser-racer.com

Buscarons, 6. 08022 Barcelona (Spain)

Tel.: (+34) 934 186 632

Mobile: (+34) 616 420 634

E-Mail: info@cruiser-racer.com

<b>DECK</b>	
<b>Notes</b>	<p>Teak on side deck and on central deckhouse Teak seats on pushpits            Complete Teak deck refurbishment in 2021</p> <p>Primaries/genoa: 2 x Andersen 568STE-FS 12V 2 speed electrical primaries instead of standard.            Halyards: 2 x Andersen 46 ST-FS            Mainsheet German style: 2 x Andersen 46 ST-FS</p> <p>Spinlock clutches for halyards reef and control lines Pro furl Roller furling on Head stay.</p> <p>Gates in life lines Spinnaker equipment Continuous rail protection.</p> <p>Mooring cleats amidships for springs.</p>

<b>SAFETY</b>	
<b>Ce Registration</b>	yes
<b>Fire Extinguishers</b>	yes

<b>CONSTRUCTION</b>	
<b>Keel</b>	Divinycell and Solid laminate
<b>Notes</b>	<p>Hull and deck are built in a sandwich construction made up of isolatic polyester resin and biaxial E-glass fabric.</p> <p>Further reinforcements are with particular positioned biaxial E-glass fabric in high stress areas. Core material is 25-30 mm compressed Divinycell®            Solid laminate is used around keel, rudder and through-hull fittings for maximum strength.</p> <p>Hull painted in 2021.            Antifouling every year.</p>

# **C R U I S E R R A C E R**

[www.cruiser-racer.com](http://www.cruiser-racer.com)

## **ACCOMODATIONS**

<b>Berths Number</b>	6
<b>Cabins Number</b>	3
<b>Bath Shower</b>	Yes
<b>Cabin Height</b>	2 m

# **C R U I S E R R A C E R**

[www.cruiser-racer.com](http://www.cruiser-racer.com)

**Buscarons, 6. 08022 Barcelona (Spain)**

**Tel.: (+34) 934 186 632**

**Mobile: (+34) 616 420 634**

**E-Mail: [info@cruiser-racer.com](mailto:info@cruiser-racer.com)**

# C R U I S E R R A C E R

www.cruiser-racer.com

## ACCOMODATIONS

Notes

MODERN 3 cabin version

Wooden interior is teak in hand polished satin finish Leather in saloon.

Main saloon – Leather 02048 Beige Cabins forward & aft – Aron Blue 510  
The yacht's wooden interior is teak in hand polished satin finish. All carpentry is carried out in accordance with best yacht practice, and the numbers of visible screws have been reduced to a minimum. The modern inner liner has integrated dome halogen spotlights and Oceanair units in the hatches.

All windows are equipped with curtains except for the aft cabin windows, where white push button blinds are supplied.

The floorboards are made of laminated teak and allow access to the bilge whereas the companionway steps are shaped teak.

### Aft cabins

Two aft cabins and aft head.

The aft cabins have one large double berth (205x150/100 cm) each. The starboard aft cabin has a wardrobe (85x70 cm deep) with shelves and hangers; the port side cabin has a wardrobe (40x75 cm deep) for hangers; both cabins have an additional open top shelf.

### Heads (2 units)

Each head has a water-flushed pump toilet and GRP sinks with hot/cold water mixing tap/shower units. The heads are equipped with s/s towel hooks and toilet paper holder. Mirrors are mounted on front opening lockers.

### Saloon

On starboard side there is a U-shaped large sofa (310 cm) surrounding the oval table (80x125 cm), which has a built-in bar.

The middle 2-seater sofa (120 cm) rounds off the saloon.

In the upper cabinets behind the large sofa, storage space is available for glasses etc. On port side, facing the main bulkhead, a wardrobe with shelves is fitted.

### Owner's cabin

The cabin has a large double berth (205x150/120 cm) and a settee (100x70 cm). For storage, the modern design incorporates a double wardrobe (75x80cm deep) with shelves and hangers and an additional 2 drawers underneath.

Further 3 drawers are positioned on starboard side, and bedding can be stored underneath the berth. Natural light from the hatch, the skylight and hull-lights is employed to compliment the polished teak woodwork, achieving a warm and cosy atmosphere, also during daylight.

The freeboard lining is made of white sky. Also here, the batten system under the cushions ensures a more comfortable sleeping environment.

# C R U I S E R R A C E R

www.cruiser-racer.com

Buscarons, 6. 08022 Barcelona (Spain)

Tel.: (+34) 934 186 632

Mobile: (+34) 616 420 634

E-Mail: info@cruiser-racer.com



# **C R U I S E R R A C E R**

[www.cruiser-racer.com](http://www.cruiser-racer.com)

## **EXTRA NOTES**

<b>Radio Cd</b>	yes
<b>Speakers Cockpit</b>	yes
<b>Shower Cockpit</b>	yes
<b>Swimming Ladder</b>	yes
<b>Extra Notes</b>	CD radio Bas/Loudspeaker

# **C R U I S E R R A C E R**

[www.cruiser-racer.com](http://www.cruiser-racer.com)

**Buscarons, 6. 08022 Barcelona (Spain)**

**Tel.: (+34) 934 186 632**

**Mobile: (+34) 616 420 634**

**E-Mail: [info@cruiser-racer.com](mailto:info@cruiser-racer.com)**

# **C R U I S E R R A C E R**

[www.cruiser-racer.com](http://www.cruiser-racer.com)



# **C R U I S E R R A C E R**

[www.cruiser-racer.com](http://www.cruiser-racer.com)

Buscarons, 6. 08022 Barcelona (Spain)

Tel.: (+34) 934 186 632

Mobile: (+34) 616 420 634

E-Mail: [info@cruiser-racer.com](mailto:info@cruiser-racer.com)

# **C R U I S E R R A C E R**

[www.cruiser-racer.com](http://www.cruiser-racer.com)



# **C R U I S E R R A C E R**

[www.cruiser-racer.com](http://www.cruiser-racer.com)

Buscarons, 6. 08022 Barcelona (Spain)

Tel.: (+34) 934 186 632

Mobile: (+34) 616 420 634

E-Mail: [info@cruiser-racer.com](mailto:info@cruiser-racer.com)

# CRUISER RACER

[www.cruiser-racer.com](http://www.cruiser-racer.com)



# CRUISER RACER

[www.cruiser-racer.com](http://www.cruiser-racer.com)

Buscarons, 6. 08022 Barcelona (Spain)

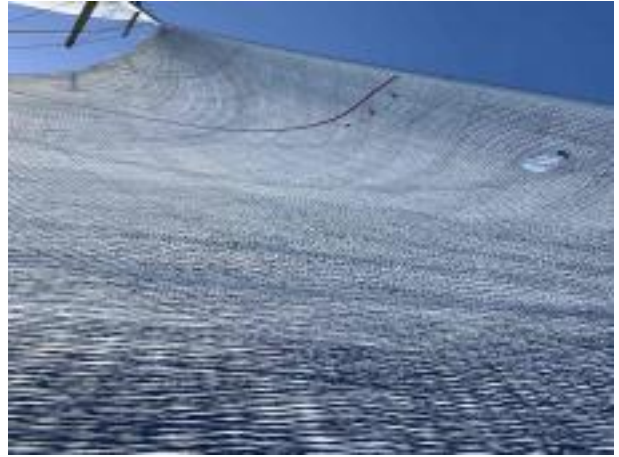
Tel.: (+34) 934 186 632

Mobile: (+34) 616 420 634

E-Mail: [info@cruiser-racer.com](mailto:info@cruiser-racer.com)

# **C R U I S E R R A C E R**

[www.cruiser-racer.com](http://www.cruiser-racer.com)



# **C R U I S E R R A C E R**

[www.cruiser-racer.com](http://www.cruiser-racer.com)

Buscarons, 6. 08022 Barcelona (Spain)

Tel.: (+34) 934 186 632

Mobile: (+34) 616 420 634

E-Mail: [info@cruiser-racer.com](mailto:info@cruiser-racer.com)

# **C R U I S E R R A C E R**

[www.cruiser-racer.com](http://www.cruiser-racer.com)



# **C R U I S E R R A C E R**

[www.cruiser-racer.com](http://www.cruiser-racer.com)

Buscarons, 6. 08022 Barcelona (Spain)

Tel.: (+34) 934 186 632

Mobile: (+34) 616 420 634

E-Mail: [info@cruiser-racer.com](mailto:info@cruiser-racer.com)

# **C R U I S E R R A C E R**

[www.cruiser-racer.com](http://www.cruiser-racer.com)



# **C R U I S E R R A C E R**

[www.cruiser-racer.com](http://www.cruiser-racer.com)

Buscarons, 6. 08022 Barcelona (Spain)

Tel.: (+34) 934 186 632

Mobile: (+34) 616 420 634

E-Mail: [info@cruiser-racer.com](mailto:info@cruiser-racer.com)

# **C R U I S E R R A C E R**

[www.cruiser-racer.com](http://www.cruiser-racer.com)



# **C R U I S E R R A C E R**

[www.cruiser-racer.com](http://www.cruiser-racer.com)

Buscarons, 6. 08022 Barcelona (Spain)

Tel.: (+34) 934 186 632

Mobile: (+34) 616 420 634

E-Mail: [info@cruiser-racer.com](mailto:info@cruiser-racer.com)



# **C R U I S E R R A C E R**

[www.cruiser-racer.com](http://www.cruiser-racer.com)



# **C R U I S E R R A C E R**

[www.cruiser-racer.com](http://www.cruiser-racer.com)

Buscarons, 6. 08022 Barcelona (Spain)

Tel.: (+34) 934 186 632

Mobile: (+34) 616 420 634

E-Mail: [info@cruiser-racer.com](mailto:info@cruiser-racer.com)

# **C R U I S E R R A C E R**

[www.cruiser-racer.com](http://www.cruiser-racer.com)



# **C R U I S E R R A C E R**

[www.cruiser-racer.com](http://www.cruiser-racer.com)

Buscarons, 6. 08022 Barcelona (Spain)

Tel.: (+34) 934 186 632

Mobile: (+34) 616 420 634

E-Mail: [info@cruiser-racer.com](mailto:info@cruiser-racer.com)

# **C R U I S E R R A C E R**

[www.cruiser-racer.com](http://www.cruiser-racer.com)



# **C R U I S E R R A C E R**

[www.cruiser-racer.com](http://www.cruiser-racer.com)

**Buscarons, 6. 08022 Barcelona (Spain)**

**Tel.: (+34) 934 186 632**

**Mobile: (+34) 616 420 634**

**E-Mail: [info@cruiser-racer.com](mailto:info@cruiser-racer.com)**