

-1100-

CODE YACHTS CAYMAN 28

FOR SALE



C R U I S E R R A C E R

www.cruiser-racer.com

GENERAL	
Name	CODE YACHTS CAYMAN 28
Model	CAYMAN 28
Type	RACER
Year	2023
Hull Material	GRP
Flag	-
Color	GREY
Lying	HUNGARY
Price	PRICE UNDER REQUEST
Vat	NOT PAID
Slogan	the Cayman28, a high-performance racing yacht
General Notes	Code Yachts Ltd. is excited to announce the launch of their latest project, the Cayman28, a high-performance racing yacht designed by the esteemed naval architect, Mark Mills, and engineered by SDK Structures, under the leadership of Steve Koopman. As a fresh wave in the sailing industry, Code Yachts is proud to introduce this state-of-the-art racing yacht that boasts exceptional speed, agility, and design.

DESIGN	
Builder	Code Yachts
Designer	Mark Mills

C R U I S E R R A C E R

www.cruiser-racer.com

Buscarons, 6. 08022 Barcelona (Spain)

Tel.: (+34) 934 186 632

Mobile: (+34) 616 420 634

E-Mail: info@cruiser-racer.com

C R U I S E R R A C E R

www.cruiser-racer.com

DESIGN

Notes	<p>The all-carbon sportsboat features extendable racks that allow the crew to produce far more righting moment than a conventional hiking position, as well as a more comfortable seating position. In daysailing mode with the racks in it becomes a simple sporty daysailer, with the flat cockpit floor running forward to the stem to produce a more secure foredeck. With load-sharing sails by Doyle, the simple no-backstay rig is adjusted with underdeck forestay and jib tack purchases, relying on the pin-adjustable shrouds to make rig setup easy and repeatable.</p> <p>The sliding racks are very successful, providing a more comfortable seating position than a conventional cockpit with a very solid feel even with 5 full size crew, leading to the description 'Gentleman's Skiff'. The racks have sockets for carbon stanchions to carry a webbing strap for more comfort when extended or better enclosure when sailing with them retracted. The appendages are all carbon, with a weed knife in the keel and a lifting rudder blade allowing easy weed-clearance in the Caribbean. Three hatches on the floor offer access under the cockpit, revealing a Lombardini 10hp inboard and storage space.</p>
--------------	--

DIMENSIONS

Loa	8.52 m
Beam	3.90 m
Draft	1.92 m
Displacement	1.100 kg

SPARS & RIGGING

**C R U I S E R
R A C E R**

www.cruiser-racer.com

Buscarons, 6. 08022 Barcelona (Spain)

Tel.: (+34) 934 186 632

Mobile: (+34) 616 420 634

E-Mail: info@cruiser-racer.com

SPARS & RIGGING

Sails	<p>J 3,40 P 10,46 E 3,89 LP 3,51 STL 6,10 Main 27,00 sqm Jib 19,46 sqm Spinnaker 84,00 sqm</p> <p>With load-sharing sails by Doyle</p> <p>The Doyle-powered Cayman 28 launched on Lake Balaton last week, the newest design from Mills Design is an all carbon sports-boat. Stefano Nava of Doyle Sails international design group has worked closely on this project during conception and design studies, and together with Mark Mills has utilised the Doyle Sails Structured Luff technology to ensure load-sharing throughout the rig makes for an easily adjustable and quick-to-set-up high performance sail boat.</p> <p>says lead sail designer Stefano Nava "The Structured Luff technology was brought into play early on as we quickly realized how it would simplify some of the handling, for example allowing a no-runner rig set-up, without compromising the performance. The technology, thanks to the extra trimming gear that can bring to any project, allowed us to reduce the upwind sail inventory to a very simple and effective Main and Jib combo, still managing to cover efficiently the intended sailing range."</p> <p>ABOUT DOYLE SAILS // Doyle Sails strives to deliver success through high-performance, high-quality, custom sails that continue to redefine the boundaries of sailmaking technology and innovation; whilst connecting sailors to inspire, support and encourage sailing.</p>
Mast	Carbon
Notes	<p>The philosophy for the boat was to keep it simple and light, with coarse and fine adjustment for the main and jib sheets removing the need for winches</p> <p>the asymmetric spinnaker sheet benefits from a low profile Harken Snubbair on the rack.</p>

CONSTRUCTION

C R U I S E R R A C E R

www.cruiser-racer.com

CONSTRUCTION

Notes	<p>This 28-foot racing yacht is constructed from carbon fiber and features top-of-the-line components, such as the innovative seating racks, which provide optimal stability and a secure platform for the crew even in the toughest sailing conditions.</p> <p>The engineering partner was SDK in Rhode Island to ensure the necessary light weight of 1100kg, smart detailing, and robust structure. 'Rooster' as she is known was launched on schedule by Code Yachts in Hungary in time for their major event of the season, the 600-entrant Blue Riband, and after one short test sail raced the 96 miles around Lake Balaton. Designed to take advantage of Doyle load-sharing sail designs the simple no-backstay rig is adjusted with underdeck forestay and jib tack purchases, relying on pin-adjustable shrouds to make rig setup easy and repeatable. The philosophy for the boat was to keep it simple and light, with coarse and fine adjustment for the main and jib sheets removing the need for winches, while the asymmetric spinnaker sheet benefits from a low profile Harken Snubbair on the rack.</p>

ACCOMODATIONS

Bath Shower	No

C R U I S E R R A C E R

www.cruiser-racer.com

Buscarons, 6. 08022 Barcelona (Spain)

Tel.: (+34) 934 186 632

Mobile: (+34) 616 420 634

E-Mail: info@cruiser-racer.com

C R U I S E R R A C E R

www.cruiser-racer.com



C R U I S E R R A C E R

www.cruiser-racer.com

Buscarons, 6. 08022 Barcelona (Spain)

Tel.: (+34) 934 186 632

Mobile: (+34) 616 420 634

E-Mail: info@cruiser-racer.com

C R U I S E R R A C E R

www.cruiser-racer.com



C R U I S E R R A C E R

www.cruiser-racer.com

Buscarons, 6. 08022 Barcelona (Spain)

Tel.: (+34) 934 186 632

Mobile: (+34) 616 420 634

E-Mail: info@cruiser-racer.com

C R U I S E R R A C E R

www.cruiser-racer.com



C R U I S E R R A C E R

www.cruiser-racer.com

Buscarons, 6. 08022 Barcelona (Spain)

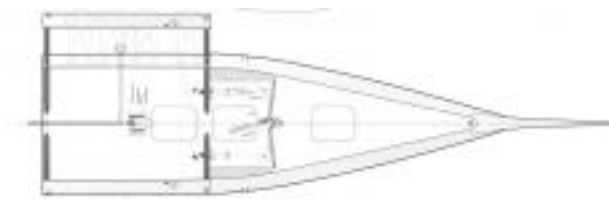
Tel.: (+34) 934 186 632

Mobile: (+34) 616 420 634

E-Mail: info@cruiser-racer.com

C R U I S E R R A C E R

www.cruiser-racer.com



C R U I S E R R A C E R

www.cruiser-racer.com

Buscarons, 6. 08022 Barcelona (Spain)

Tel.: (+34) 934 186 632

Mobile: (+34) 616 420 634

E-Mail: info@cruiser-racer.com

C R U I S E R R A C E R

www.cruiser-racer.com



C R U I S E R R A C E R

www.cruiser-racer.com

Buscarons, 6. 08022 Barcelona (Spain)

Tel.: (+34) 934 186 632

Mobile: (+34) 616 420 634

E-Mail: info@cruiser-racer.com